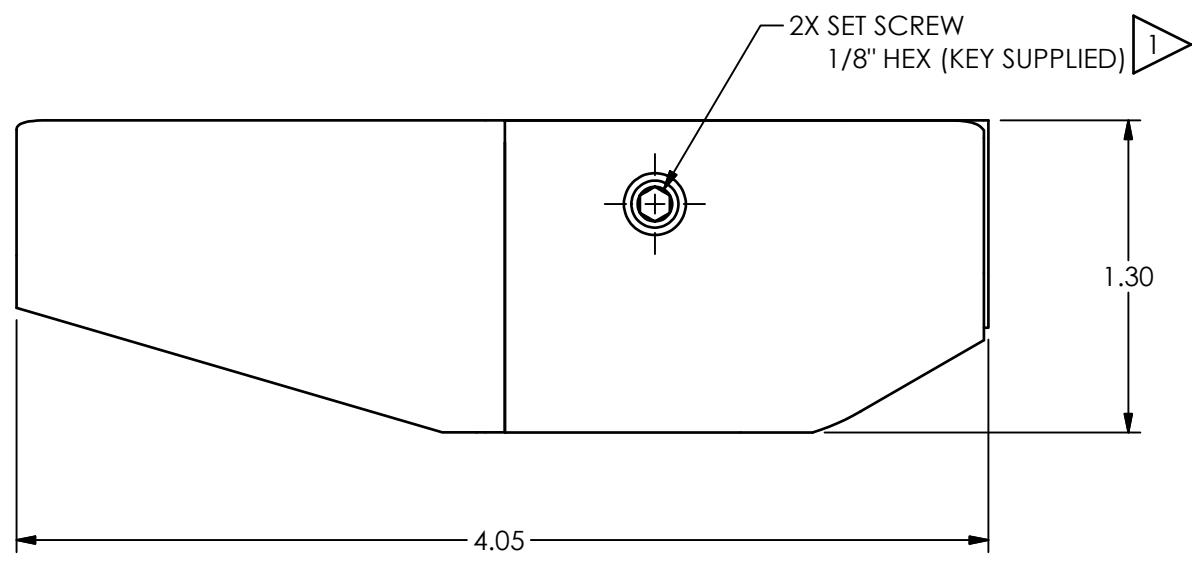
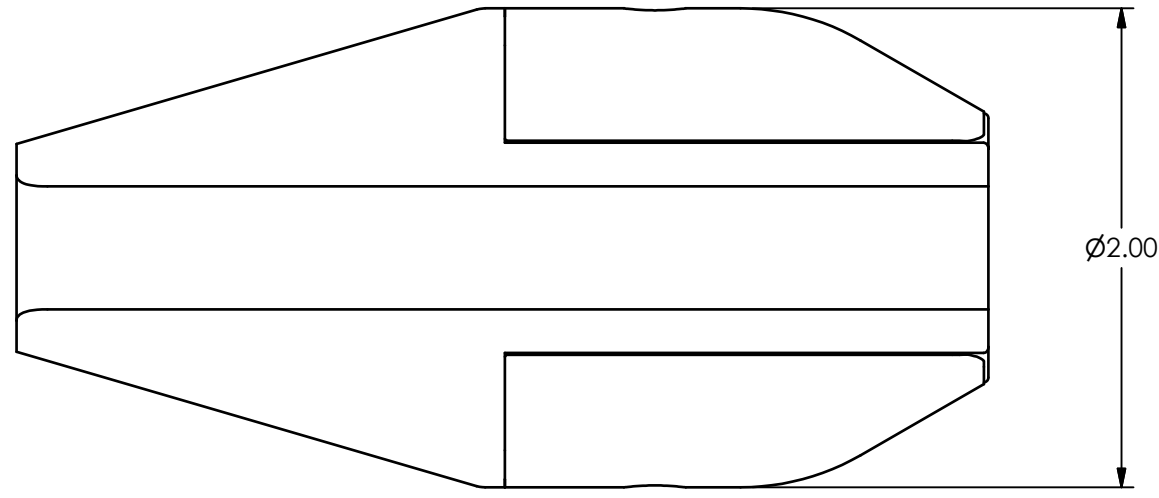


PCB Piezotronics Inc. claims proprietary rights in the information disclosed hereon. Neither it nor any reproduction thereof will be disclosed to others without the written consent of PCB Piezotronics Inc.

72927

REVISIONS		
REV	DESCRIPTION	DIN
NR	RELEASED TO DRAFTING	50718



1 RECOMMENDED MOUNTING TORQUE 8 - 12 IN-LB [.9 - 1.4Nm]

UNLESS OTHERWISE SPECIFIED TOLERANCES ARE:		DRAWN		CHECKED		ENGINEER	
DIMENSIONS IN INCHES	DIMENSIONS IN MILLIMETERS [IN BRACKETS]	JDM	5/8/20	JDM	5/8/20	DRK	5/8/20
DECIMALS XX ±.01 XXX ±.005	DECIMALS X ±.03 XX ±.013	TITLE INSTALLATION DRAWING MOUNTING ADAPTOR					
ANGLES ± 2 DEGREES	ANGLES ± 2 DEGREES						
FILLETS AND RADII .003 - .005	FILLETS AND RADII 0.07 - 0.13	CODE IDENT. NO. 52681		DWG. NO. 72927		3425 WALDEN AVE. DEPEW, NY 14043 (716) 684-0001 E-MAIL: sales@pcb.com	
		SCALE: 1.25X		SHEET 1 OF 2			



3425 WALDEN AVE. DEPEW, NY 14043
(716) 684-0001 E-MAIL: sales@pcb.com

CODE IDENT. NO. 52681
DWG. NO. 72927

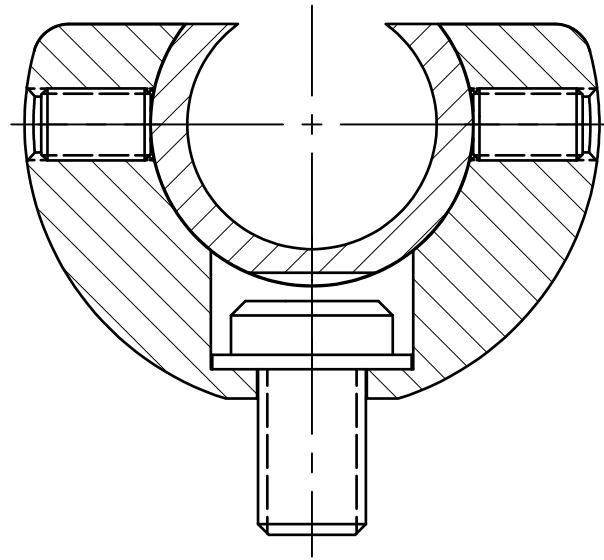
SCALE: 1.25X SHEET 1 OF 2

PCB Piezotronics Inc. claims proprietary rights in the information disclosed hereon. Neither it nor any reproduction thereof will be disclosed to others without the written consent of PCB Piezotronics Inc.

72927

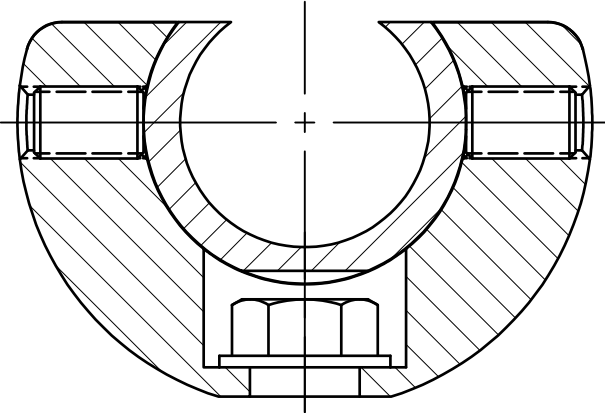
MOUNTING VARIATIONS

REVISIONS		
REV	DESCRIPTION	DIN
	- SEE SHEET 1 -	

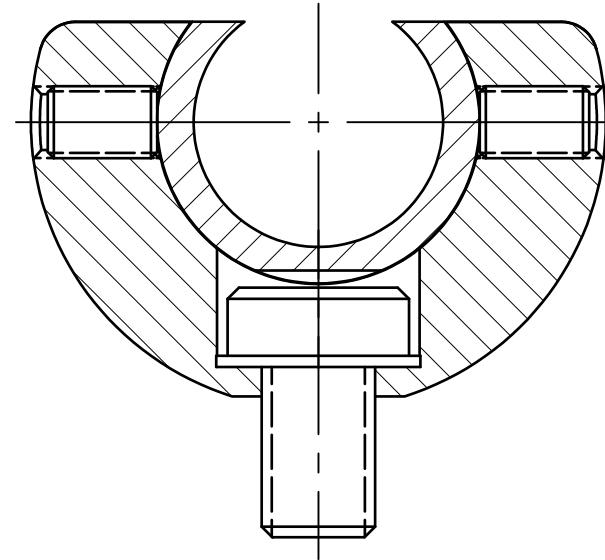


3/8-16 UNC-3A

RECOMMENDED MOUNTING TORQUE: 18 - 28FT-LB [24 - 38Nm]

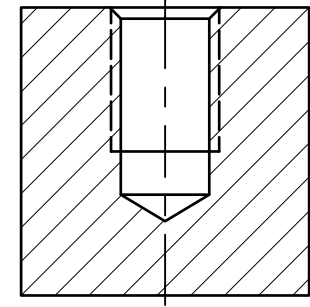


1/4-20 UNC-2B



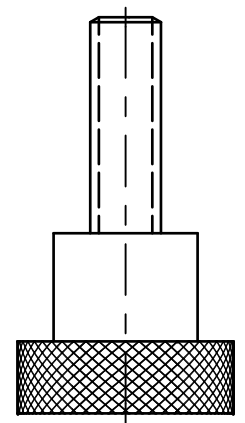
M10x1.5 - 6g

RECOMMENDED MOUNTING TORQUE: 25 - 35FT-LB [34 - 47Nm]



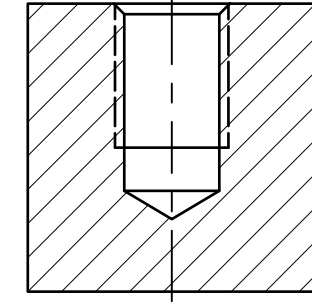
STANDARD MOUNTING HOLE PREPERATION

3/8-16 UNC-3B ∇ .500 [12.70] MIN



STANDARD CAMERA TRIPOD MOUNT

(NOT SUPPLIED)



METRIC MOUNTING HOLE PREPERATION

M10x1.5-6H ∇ .500 [12.70] MIN

UNLESS OTHERWISE SPECIFIED TOLERANCES ARE:		DRAWN		CHECKED		ENGINEER	
DIMENSIONS IN INCHES	DIMENSIONS IN MILLIMETERS [IN BRACKETS]	JDM	5/8/20	JDM	5/8/20	DRK	5/8/20
DECIMALS XX ±.01 XXX ±.005	DECIMALS X ±.3 XX ±.13	TITLE INSTALLATION DRAWING MOUNTING ADAPTOR					
ANGLES ± 2 DEGREES	ANGLES ± 2 DEGREES						
FILLETS AND RADII .003 - .005	FILLETS AND RADII 0.07 - 0.13	CODE IDENT. NO. 52681		DWG. NO. 72927		3425 WALDEN AVE. DEPEW, NY 14043 (716) 684-0001 E-MAIL: sales@pcb.com	
		SCALE: 1.5X		SHEET 2 OF 2			



3425 WALDEN AVE. DEPEW, NY 14043
(716) 684-0001 E-MAIL: sales@pcb.com

CODE IDENT. NO. 52681
DWG. NO. 72927

SCALE: 1.5X SHEET 2 OF 2