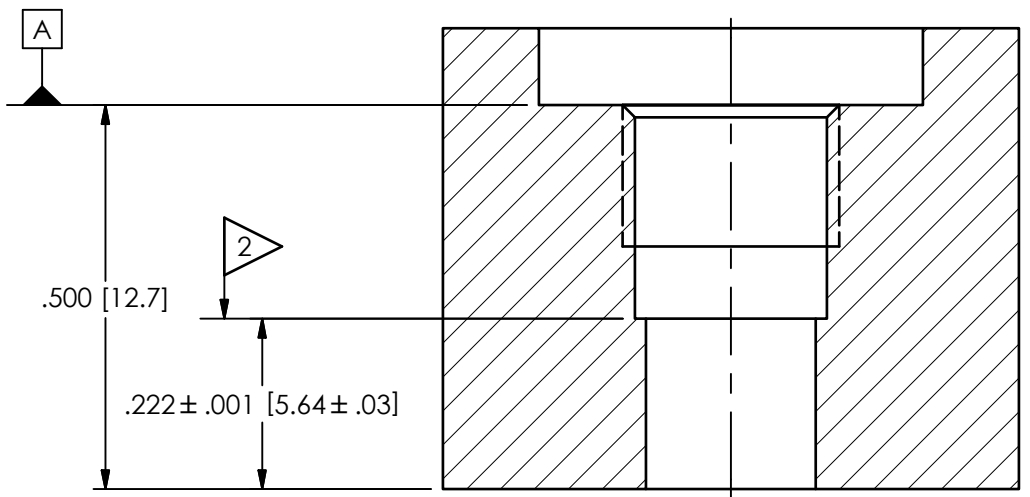
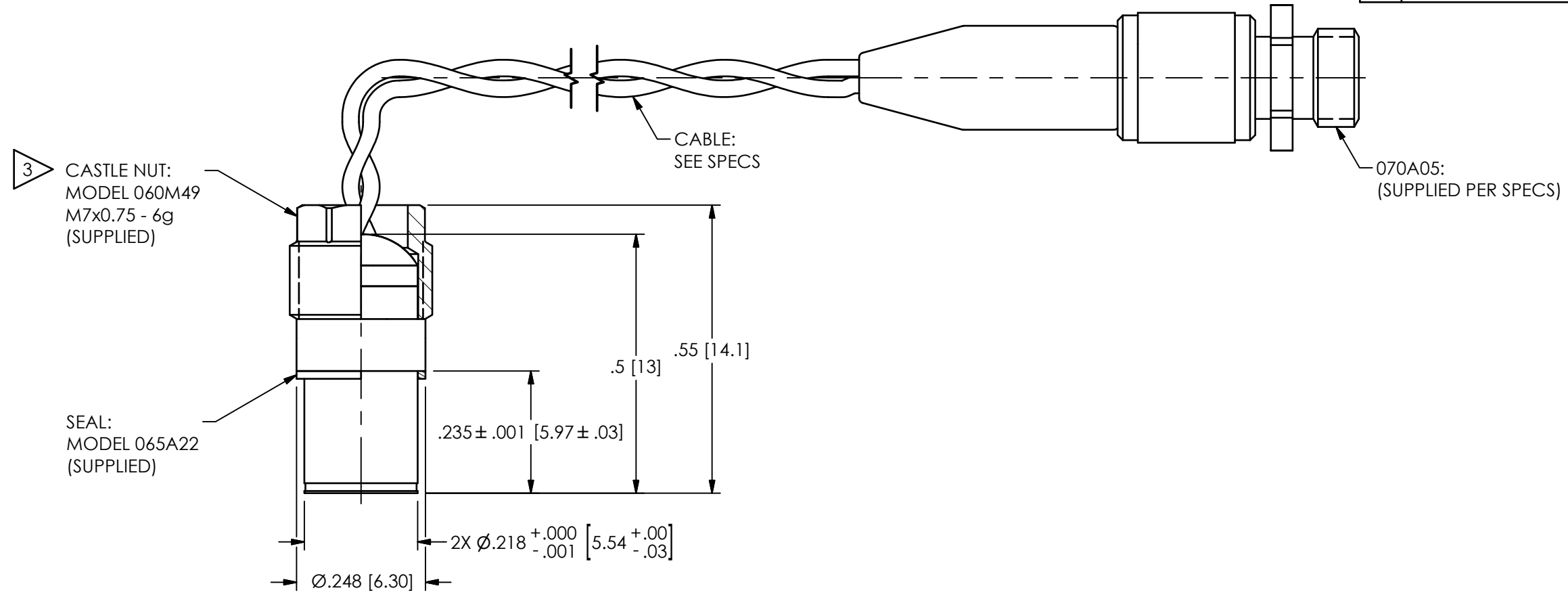


PCB Piezotronics Inc. claims proprietary rights in the information disclosed hereon. Neither it nor any reproduction thereof will be disclosed to others without the written consent of PCB Piezotronics Inc.

55522

REVISIONS		
REV	DESCRIPTION	DIN
B	REMOVED SEAL, UPDATED MOUNTING TORQUE	45222



MOUNTING HOLE PREPARATION:

- 1 $\varnothing.221 \pm .002 [5.61 \pm .05]$ THRU
- 2 $\varnothing.250^{+.003}_{-.000} [6.35^{+.08}_{-.00}]$ TO DEPTH SHOWN
- M7x0.75 - 6H $\nabla.184$ FROM DATUM A
- 4 $\varnothing.50$ TO DEPTH SHOWN

- 4 CLEARANCE FOR TORQUE TOOL, DIAMETER NOT CRITICAL
- 3 RECOMMENDED MOUNTING TORQUE: 20-24 IN-LBS [2.3-2.7 NEWTON-METERS]
- 2 MOUNTING SURFACE SHOULD BE FLAT TO WITHIN $.001 [0.03]$ TIR OVER $\varnothing.250 [6.35]$ WITH A MINIMUM 63 [1.6] FINISH FOR BEST RESULTS
- 1 DRILL PERPENDICULAR TO MOUNTING SURFACE TO WITHIN $\pm 1^\circ$

UNLESS OTHERWISE SPECIFIED TOLERANCES ARE:		DRAWN		CHECKED		ENGINEER	
DIMENSIONS IN INCHES	DIMENSIONS IN MILLIMETERS [IN BRACKETS]	JDM	3/18/16	JDM	3/18/16	DRK	3/18/16
DECIMALS XX $\pm .01$ XXX $\pm .005$	DECIMALS X ± 0.3 XX ± 0.13	TITLE INSTALLATION DRAWING MODEL 112M362 PRESSURE SENSOR					
ANGLES ± 2 DEGREES	ANGLES ± 2 DEGREES						
FILLETS AND RADII .003 - .005	FILLETS AND RADII 0.07 - 0.13	CODE IDENT. NO. 52681		DWG. NO. 55522		3425 WALDEN AVE. DEPEW, NY 14043 (716) 684-0001 E-MAIL: sales@pcb.com	
		SCALE: 4X		SHEET 1 OF 1			

